

Blaby District Profile – Update April 2017

Blaby District Council is in the East Midlands of England. The Council covers an area of 13,000 hectares or 129 km² to the south west of Leicester, part of which borders Leicester City Council. The district contains the M1/M69 junction which is close to the major shopping centre of Fosse Park.

The area is classified as urban by Natural England although is part rural and includes a number of villages.

Blaby has population of 96,500 and a similar demographic profile to that regionally and nationally although the Asian population is now 6.1% which is about the same as the regional figures but slightly below the national figures. It has low levels of deprivation, unemployment and employment concentrated in the professional and technical occupations.

Detailed statistics are provided below, further information available from the source references and links.

Population - The district has:

- A population of 96,500 (2014 ONS) although this is predict to rise to 111,000 by 2039, a 14% change from 2016. This is lower than the expected rate of increase for Leicestershire and England, but greater than the expected rate for the East Midlands.
- The district has higher population density than nationally, 748 persons per square kilometre as opposed to 324 persons per square kilometre across Leicestershire (excl. city), and 302 in Great Britain.
- Blaby's under 20 population at 23.2% is similar to the East Midlands and England. However, Blaby's population of over 65's is slightly higher at 20.2% than the averages across the East Midlands and England. The over 65 population is projected to be at 22.1% by 2024 and 26.1% by 2039
- There are 41,871 households (Council Tax Data as of April 2017)
- In 2011, in Blaby, 88.5% of residents were White British and 11.5% were from Minority Ethnic Groups.
- The largest Minority Ethnic Group is Asian or Asian British (6.1%), the same group in the East Midlands makes up a proportion of 6.5%.
- Since 2001 the population has grown by 6.7%
- Females make 50.9% of the population of Blaby, this is the same as the East midlands and England as a whole.

Population Projections (000's) – 2014 based projections (to 2039)

	2016	2019	2024	2027	2032	2039	% change 2016 – 2039
Blaby	97	99	102	104	107	111	14.4%
Leicestershire excl city.	678	693	719	734	757	784	15.6%
East Midlands	4,704	4,798	4,950	5,040	5,176	5,339	13.5%
England	55,219	56,466	58,396	59,493	61,175	63,282	14.6%

Source: Office for National Statistics website:

<https://www.ons.gov.uk/peoplepopulationandcommunity/populationandmigration/populationprojections/datasets/localauthoritiesinenglandtable2>

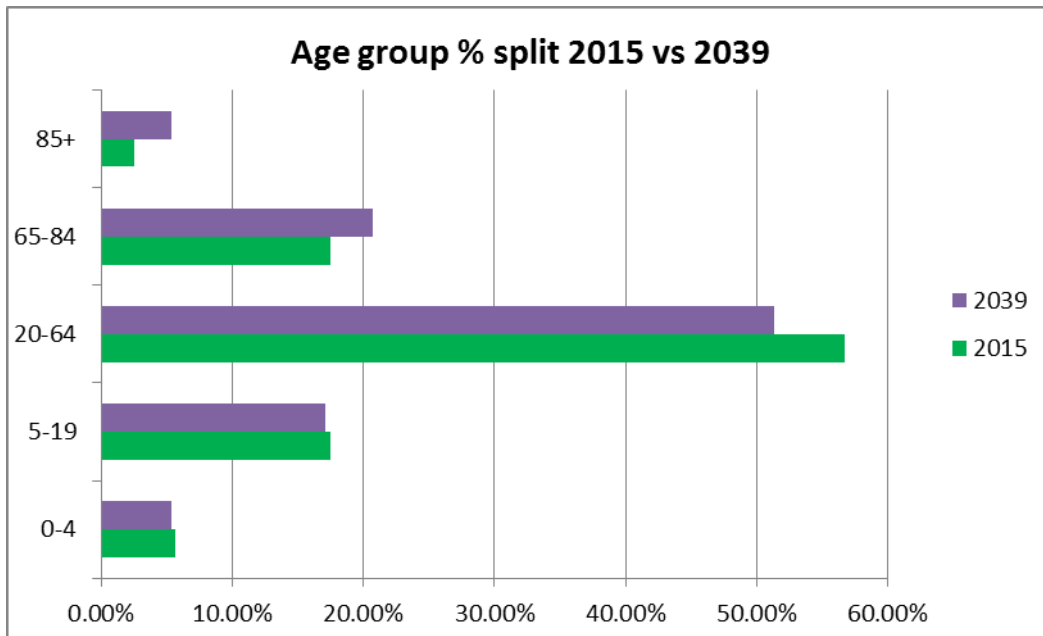
Crown copyright material is reproduced with the permission of the Controller of HMSO

Age

	Blaby	Leicestershire	East Midlands	England
Age	2015	2015	2015	2015
0-4	5.7%	5.43%	5.96%	6.27%
5-14	11.71%	11.15%	11.34%	11.6%
15-19	5.8%	6.18%	6.05%	5.87%
20 to 64	56.68%	57.47%	57.89%	58.53%
65 to 84	17.51%	17.22%	16.38%	15.36%
85 and over	2.49%	2.53%	2.39%	2.36%

Source: Source: www.Nomisweb.co.uk

Crown copyright material is reproduced with the permission of the Controller of HMSO



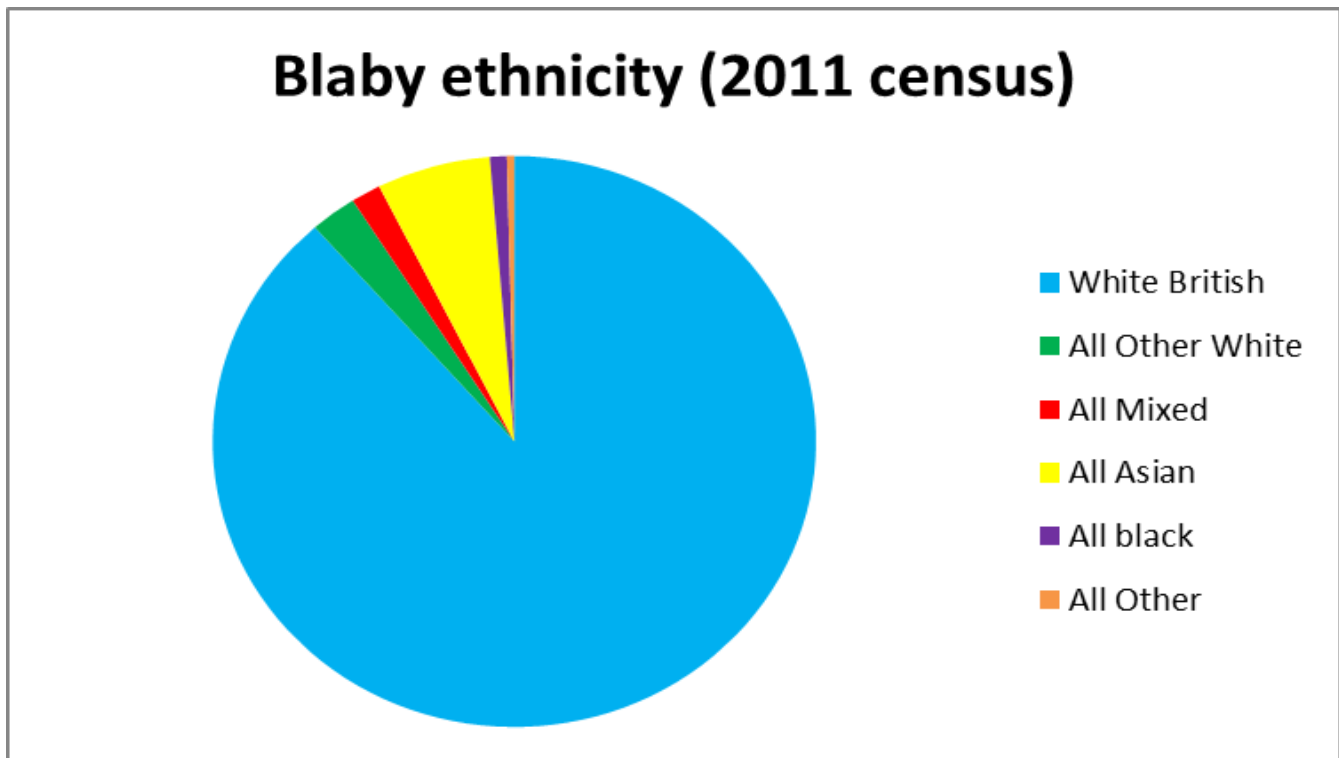
Source ONS and www.Nomisweb.co.uk

Ethnicity – (2011 Census)

Area name	White British	All Other White	All Mixed	All Asian	All black	All Other
	%	%	%	%	%	%
Blaby	88.5	2.5	1.6	6.1	0.9	0.4
Leicester UA	45.1	5.5	3.5	37.1	6.3	2.6
Leicestershire	88.9	2.5	1.3	6.3	0.6	0.4
EAST MIDLANDS	85.4	3.9	1.9	6.4	1.7	0.6
ENGLAND	79.8	5.7	2.2	7.7	3.4	1.0

Source: ONS <http://www.ons.gov.uk/ons/guide-method/census/2011/index.html>

Crown copyright material is reproduced with the permission of the Controller of HMSO



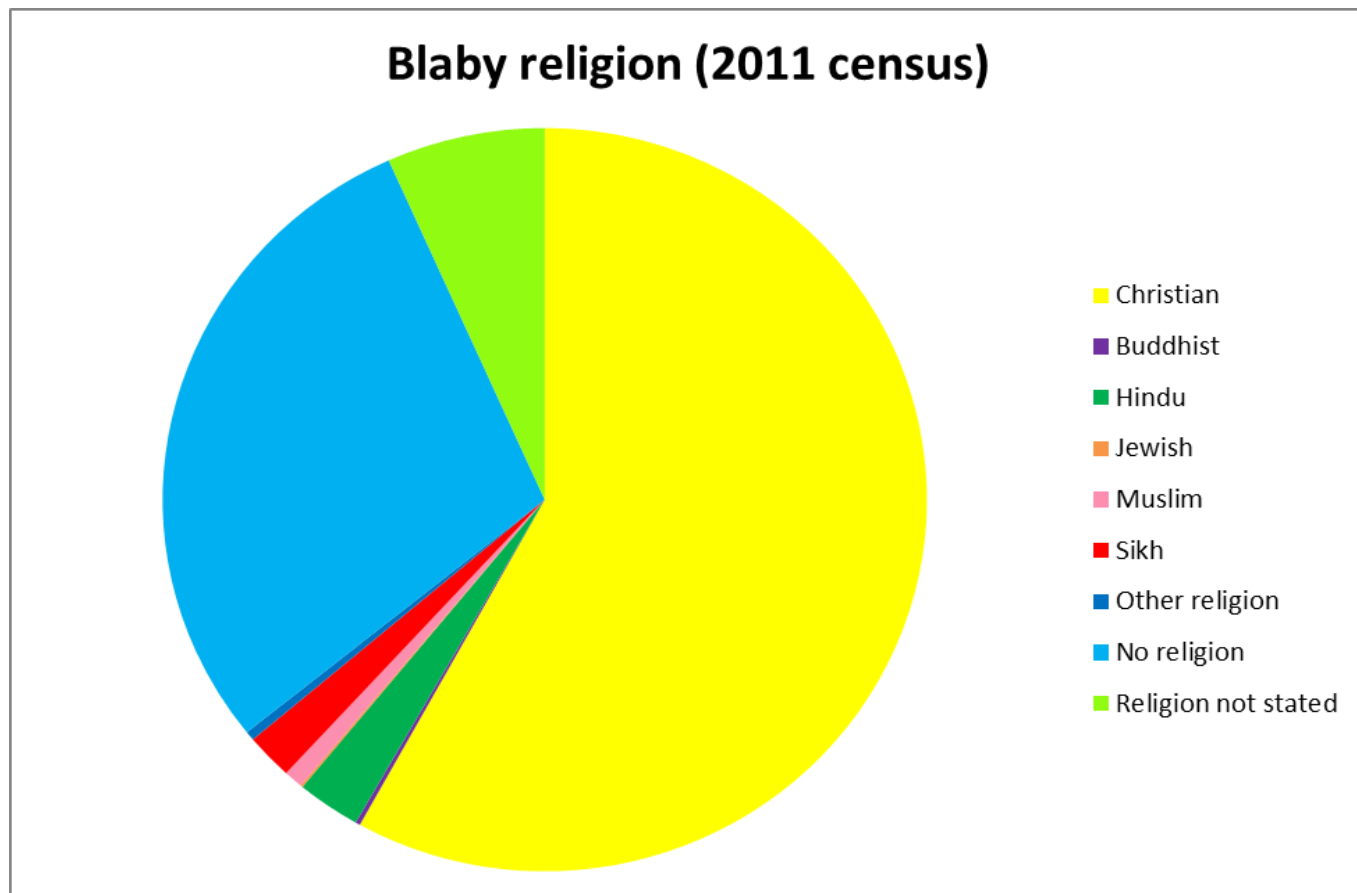
- 95.9% of the population has English as their first language
- 0.7% of Blaby residents state that they cannot speak English/cannot speak English well

Religion – (2011 Census)

Area name	Christian	Buddhist	Hindu	Jewish	Muslim	Sikh	Other religion	No religion	Religion not stated
	%	%	%	%	%	%	%	%	%
Blaby	58.1	0.2	2.7	0.1	0.8	2.0	0.4	29.1	6.7
Leicester UA	32.4	0.4	15.2	0.1	18.6	4.4	0.6	22.8	5.6
Leicestershire	60.3	0.2	2.8	0.1	1.4	1.2	0.4	27.1	6.5
EAST MIDLANDS	58.8	0.3	2.0	0.1	3.1	1.0	0.4	27.5	6.8
ENGLAND	59.4	0.5	1.5	0.5	5.0	0.8	0.4	24.7	7.2

Source: ONS <http://www.ons.gov.uk/ons/guide-method/census/2011/index.html>

Crown copyright material is reproduced with the permission of the Controller of HMSO



Deprivation - (2015 Indices of Deprivation)

Blaby district has low levels of deprivation. It is the 2nd least deprived district in Leicestershire as it was in 2010 (Harborough has remained the least deprived district in Leicestershire).

Blaby is ranked the 39th least deprived district in England (where 324 is the most deprived and 1 is the least deprived). This is a move from rank 30th in 2010 (out of 326), meaning there is **more** deprivation in the district in relative terms.

The Index of Multiple Deprivation (IMD) 2015 shows that 7,492 people in Blaby experienced **income** deprivation, the equivalent of 7.8% of the population in Blaby. In 2010 this figure stood at 6,517 people

The IMD 2015 shows that 3,805 people in Blaby experienced **employment** deprivation, the equivalent of 3.9% of the population. In 2010 this figure stood at 3,016 people. Across the 326 districts of England, the figure stands at 6.8% (3,720,144 people out of a population of 54,786,300) in 2015.

About 10.3% (1,755) children in the district live in poverty (England 20.1%).

Further information is available from the following links:

<https://www.gov.uk/government/organisations/public-health-england>

<https://www.gov.uk/government/statistics/english-indices-of-deprivation-2015>

Lone Parents

- In Blaby there are 2,315 lone parent households with dependent children. This is 6% of all households in the district, this is lower than the England figure of 7.1%, but higher than the average for Leicestershire of 5.6% (based on 2011 census).
- Of these 34% are in full time employment, 42% in part time employment and 24% are not in employment.

Employment

The district has low levels of unemployment and a high percentage of people employed in the service sector.

- It has an unemployment rate* of 0.7% (Feb 2017). This is lower than the rate for Leicestershire, East Midlands and Great Britain.
- The highest area of employment is in Associate professional and technical occupations.

Unemployment – (February 2017)

	Measure	Blaby	Leicester City	Leicestershire County	East Midlands	Great Britain
Unemployment*	%	0.7%	1.7%	0.8%	1.6%	1.9%

Source: www.nomisweb.co.uk

* Unemployment rate in terms of the number of people who claim out of work benefits only

- The percentage of young people Not in Education, Employment or Training (NEET) is 3.0% (Leicester County – sample size for Blaby was too small (Nomis website)) compared to 2.6% in Feb 14. The figure for Leicestershire is 4.2%, East Midlands 3.9% and England is 4.2% (this only includes known NEETs from end 2015).
- 4,170 of working age residents claim 1 or more benefit in the district (Nomis Aug 2016 data)

Type of employment – (Annual Population Survey Sept 2016)

	Blaby %	Leicester Shire %	East Midlands %	Great Britain %
1: managers and senior officials	9.4	12.0	10.1	10.5
2: professional occupations	15.7	19.2	17.3	20.2
3: associate prof & tech occupations	17.3	16.4	13.4	14.3
4: administrative and secretarial occupations	12.1	10.2	10.2	10.4
5: skilled trades occupations	13.1	9.9	11.4	10.4
6: caring, leisure and other service occupations	9.2	9.2	9.4	9.1
7: sales and customer service occupations	n/a	7.0	7.2	7.6
8: process, plant and machine operatives	n/a	6.4	8.6	6.4
9: elementary occupations	8.7	9.7	12.2	10.7

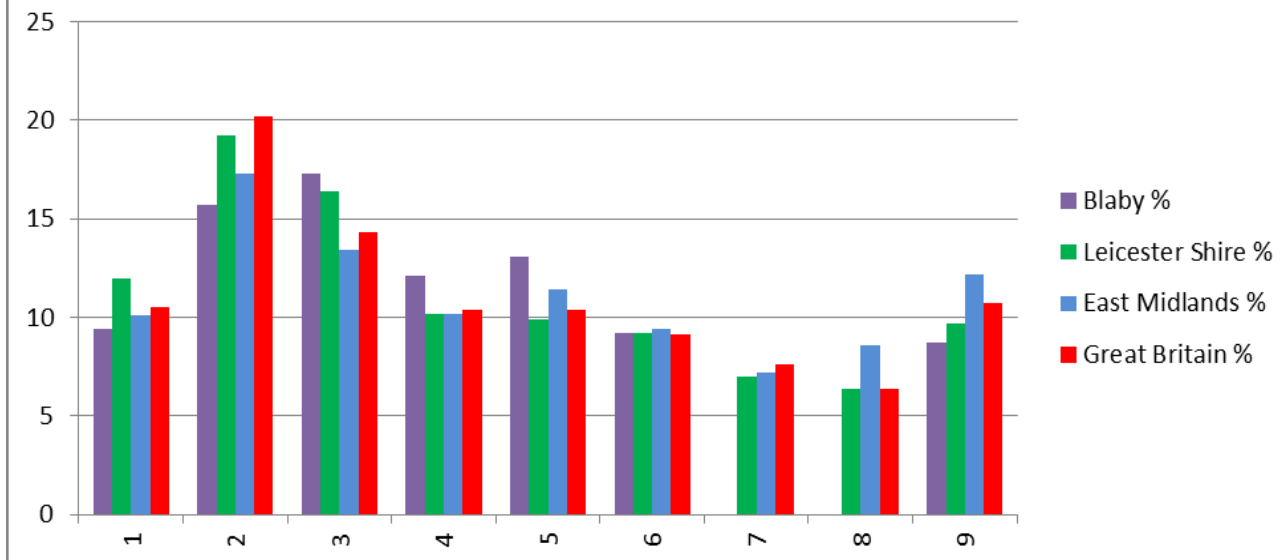
Oct15-Sep 2016 Annual Population Survey (Age 16+)

Source: National Statistics - Nomis: www.nomisweb.co.uk

Crown copyright material is reproduced with the permission of the Controller of HMSO)

n/a - Sample size too small for reliable estimate

Type of employment by area



Health

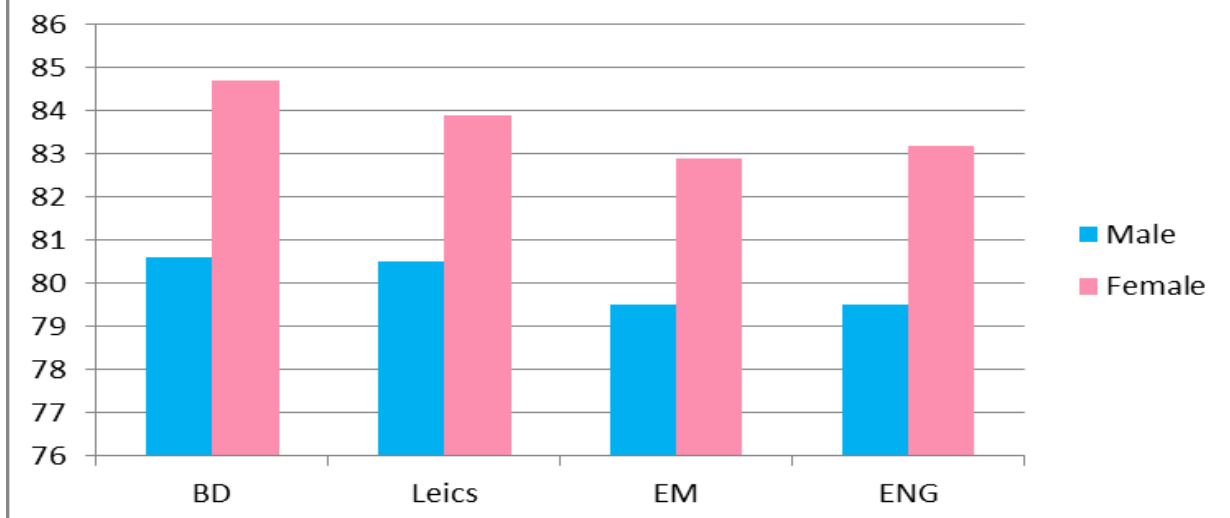
- People living in Blaby have a similar life expectancy to those living in the rest of Leicestershire (although significantly better for females), but higher than the East Midlands and England.
- The percentage of people in Blaby with a long term limiting illness is higher than in Leicestershire, East Midlands and England at 15.7%.
- 1.3% of people in Blaby claim Disability Living Allowance, whilst in Leicestershire 1.4% of people claimed this.
- In addition, 2.2% of people in Blaby claimed incapacity benefits (which includes Severe Disablement Allowance). In Leicestershire 2.4% of people claimed this.
- The number of children (in Year 6) that are obese in Blaby stands at 156 children (15%), below the national average of 19.1%

Life expectancy (2013-2015)

	Measure	Blaby	Leicestershire (excl Leic city)	East Midlands	England
Male	Years	80.6	80.5	79.5	79.5
Female	Years	84.7	83.9	82.9	83.2

Source: www.healthprofiles.info local profiles

Life expectancy



% of people aged 16- 64 with long-term limiting disability or health problem (2011 Census)

	Measure	Blaby	Leicestershire (excl Leic)	East Midlands	England
Total	%	15.8	16.2	18.6	17.6

Source: ONS: <http://www.ons.gov.uk/ons/guide-method/census/2011/index.html>

Carers

11% of local people provide 1 hour or more a week of unpaid care for others. The average for England is 10.2%.

Education

Blaby generally has lower levels of attainment and qualifications than in Leicestershire and England.

- The proportion of 11 year olds who reached the level expected for their age in Maths and English was higher in 2009 than Leicestershire and England
- The proportion of Young People gaining 5 or more A* -C GCSEs or equivalents was considerably higher (62.3%) than for both Leicestershire (57.6%) and England (56.6%) – from LGInform site 2013/14 data.
- 25% of residents have a degree level qualification or higher and 59% at least 5 GCSE's.
- 22.2% of people within Blaby do not have qualifications. This is slightly lower than the national average of 22.7% and the regional average of 24.7%.

Key Stage Tests (2009)

Indicator		Blaby	Leicestershire (excl Leic City)	England
Key Stage 2 test	English Level 4+	86%	82%	80%
	Maths Level 4 +	85%	81%	79%
GCSE or equivalents	5+ A* - C	60%	69%	57%

Source:--LSORA (Blaby), ONS regional profiles key statistics tables Oct 2011

Adults Highest level of Qualifications - (2011 Census)

Qualification level	Measure	Blaby	East Midlands	England & Wales
Level 4 or higher	%	24.9	23.6	27.2
Level 2 or higher	%	59.0	56.1	58.4
Level 1 or higher	%	73.5	70.0	71.7
No qualifications	%	22.2	24.7	22.7

Source: Annual Population Survey National (2010-2011)

Nomis: www.nomisweb.co.uk

Crown copyright material is reproduced with the permission of the Controller of HMSO)

Transport

- Blaby has a high level of car ownership. 87% of households have at least 1 car this compares to 78% of household in the East Midlands and 74.3% in England.
- Residents generally travel between 2 – 10km to work (50.7%) with the majority travelling by car or van.

Cars per household – (2011 Census)

Number of cars	Measure	Blaby	Leicestershire (excl Leic city)	East Midlands	England & Wales
none	%	13.0	15.3	22.1	25.6
1	%	42.3	41.3	42.5	42.2
2	%	34.4	33.0	27.4	24.7
3	%	7.7	7.7	6.0	5.5
4 or more	%	2.6	2.7	2.0	1.9

Source: National Statistics website: www.statistics.gov.uk

Crown copyright material is reproduced with the permission of the Controller of HMSO

Method of Transport (2011 Census)

Method	Blaby	East Midlands	England
Work Mainly at or From Home	4.8%	5.1%	5.4%
Underground, Metro, Light Rail, Tram	0.1%	0.3%	4.1%
Train	0.8%	1.3%	5.3%
Bus, Minibus or Coach	5.2%	6.2%	7.5%
Taxi	0.2%	0.4%	0.5%
Motorcycle, Scooter or Moped	0.8%	0.7%	0.8%
Driving a Car or Van	73.2%	65.6%	57.0%
Passenger in a Car or Van	5.2%	6.0%	5.0%
Bicycle	2.8%	2.7%	3.0%
On Foot	6.7%	11.0%	10.7%
Other	0.4%	0.5%	0.6%

Source: National Statistics website: www.statistics.gov.uk

Crown copyright material is reproduced with the permission of the Controller of HMSO

Distance to work (2001 Census – update not available)

Residents distance to work	Measure	Blaby
Less than 2k	%	14
2-5km	%	22
5-10km	%	29
10-20km	%	12
20-60km	%	7
60km+	%	2
Other	%	13

Source: National Statistics website: www.statistics.gov.uk

Crown copyright material is reproduced with the permission of the Controller of HMSO

Households

The district has high levels of owner occupied housing and higher than average incomes and house prices.

- 80.9% of households are owner occupied compared to 67.3% in East Midlands and 63.5% in England and Wales.
- The average net household income is £30,247 this compared to £30,091 in Leicestershire and £31,648 for England as a whole.
- Average house prices are also higher than in the East Midlands but significantly lower than the average for England.
- Families account for 24.4% of households and pensioners 22.7% of households

Tenure – (2011 Census)

	Measure	Blaby	East Midlands	England and Wales
Owner Occupied	%	80.9	67.3	63.5
Shared Ownership	%	0.6	0.7	0.8
Rented from Council or Housing Association	%	7.7	15.8	17.6
Privately rented	%	10.0	14.9	16.7

Source: National Statistics website: www.statistics.gov.uk

Crown copyright material is reproduced with the permission of the Controller of HMSO

Average Household Incomes and House Prices

	Measure	Blaby	Leicestershire excl Leic city	East Midlands	England
Average net Household Income (2014 Q4)*	£	30,247	30,091	27,832	31,648
Average House Price (2015 Q2)	£	182,318	207,511	175,631	262,356

Source : Household income: Office of National Statistics Small area income estimates for MSOA published 2015

House prices: Office of National Statistics HPSSA Dataset 3a1 Mean house price by MSOA

* Income was presented weekly, so multiplied by 52 (weeks) for annual household income

Household Type (2011)

	Measure	Blaby	East Midlands	England
Single Pensioner	%	12.3	12.3	12.3
2 or more pensioners	%	10.4	10.5	8.1
Single	%	13.8	13.8	17.9
2 Adults No Children	%	19.8	19.5	17.5
Lone Parent	%	6.0	6.7	7.1
2 Adults with children	%	24.4	21.0	20.9

ONS - Household Composition - Households (QS113EW)